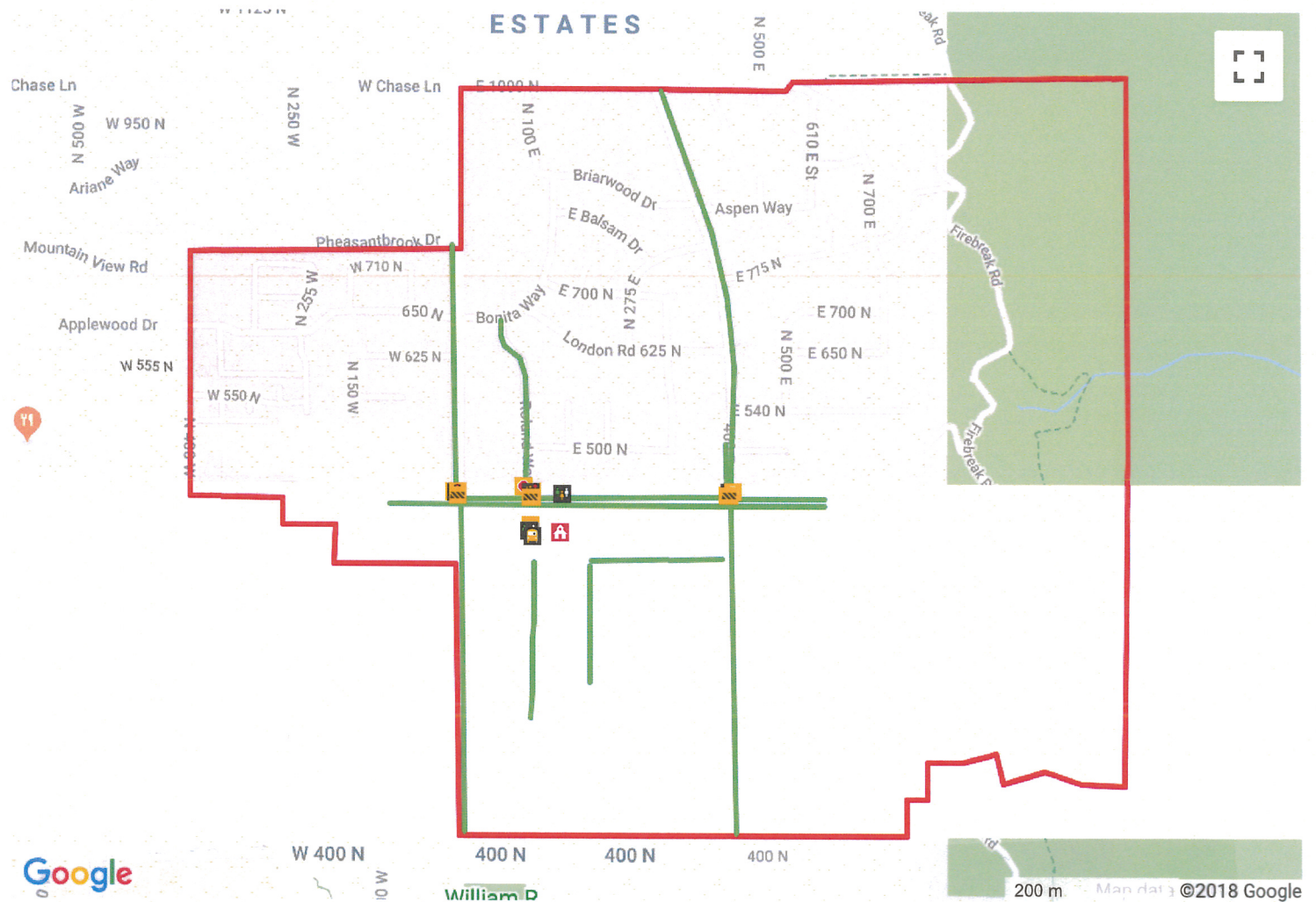




	School		School Bus Loading		Student Drop-Off/Pickup
	Hazard/Footnote		Crossing Guard		Traffic Signal
	Yield Sign		Stop Sign		Crosswalk Vertical
	Crosswalk Horizontal		Boundary		Safe Route

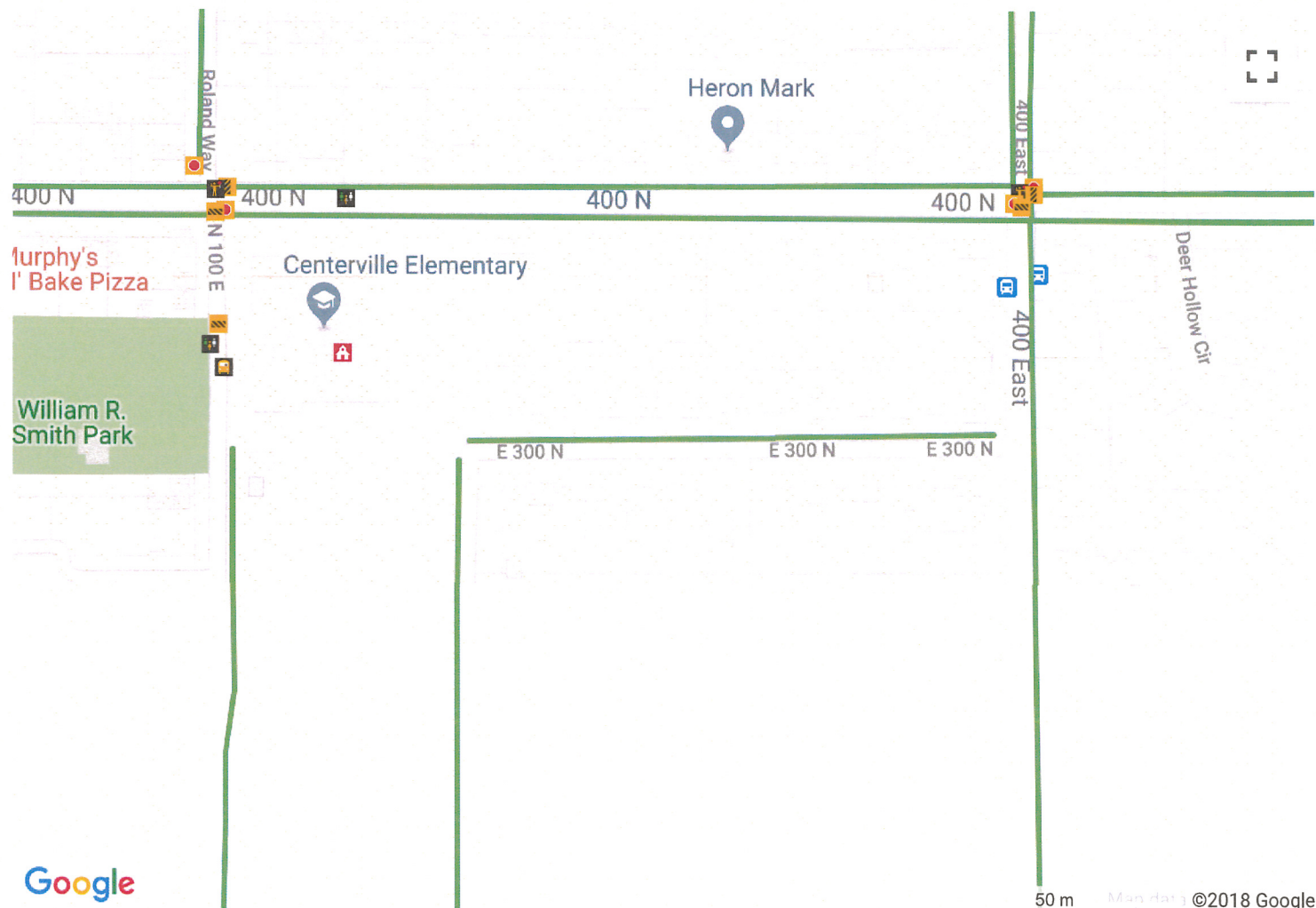
Centerville Elementary Map | 350 North 100 East, Centerville 84014





	School		School Bus Loading		Student Drop-Off/Pickup
	Hazard/Footnote		Crossing Guard		Traffic Signal
	Yield Sign		Stop Sign		Crosswalk Vertical
	Crosswalk Horizontal		Boundary		Safe Route

Centerville Elementary Map | 350 North 100 East, Centerville 84014



Contact: Dan Hansen
dahansen@dsdmail.net
 801-402-1402

All students are asked to cross the main streets only where there are crosswalks (Main, 400 E. and Parrish) -Students living east of 400 East access the school through Parrish Lane utilizing the crossing guard at 400 East and Parrish. -Students living east of Main Street and north of Parrish access the school through Parrish Lane utilizing the crossing guard at 100 East. -Students living west of Main Street access the school through Parrish Lane utilizing the crossing guard at Parrish and

Main. The established school crossings are at: -Main and Parrish -400 East and Parrish -100 East and Parrish The bicycle routes will be the same as the walking routes. Students will ride their bikes on the road as far to the right as possible, allowing the vehicle the right of way. Students will walk their bikes through established crosswalks with the crossing guard. Parents are to be instructed and reminded to drop students off along the school curbside ONLY, traveling clockwise around the perimeter of the school property. Students unloaded on the north side of Parrish Lane MUST use the crosswalk and guard at 100 East. The north parking lot is for staff parking only. This is not a through access for dropping students off or picking them up.